



CS 3050ci | Color Multifunctional System

Powering Color
Performance...
Company-wide.



Power and Performance Meet Exceptional Imaging

Created to provide superior functionality to meet the full range of your day-to-day document imaging needs, the Copystar CS 3050ci incorporates robust productivity at 30 ppm black and color, **flexible configurations** and **vibrant image quality**. Spectacular color technology and professional finishing options offer you the ability to reduce outsourcing costs by keeping shorter runs of production-quality printed pieces in-house, while an EFI Fiery® Controller option enables you to incorporate the highest level of color output you may require for those special projects. **Integrated business applications** provide the added power and capabilities to help simplify your document workflow.



Award-winning ultra-reliability and unique long-life technology ensure superior performance, proven productivity and maximum efficiency. When it comes to document imaging innovation and quality you can rely on, the CS 3050ci delivers.

Enhanced Features Drive Exceptional Functionality

The CS 3050ci is strong on features and configurations, offering the flexibility to scale your MFP to the specific needs of your office. It's all about feature-rich design with a focus on value and exceptional color functionality.

Only From Kyocera

KYOCERA Document Solutions is a global leader in the digital imaging industry, with an award-winning line of multifunctional systems and ECOSYS laser printers, products that consistently set the standard for high performance, superior image quality, ease-of-use and durability. Along with a full complement of advanced business applications and networking solutions, Kyocera's robust product line supports your need for maximum productivity at minimal total cost.

Kyocera continually strives to raise the bar for excellence in both products and service for exceptional results you and your business can count on.

Keeping the Future Green

Kyocera is committed to pursuing a harmonious balance between economic development and environmental preservation. We adhere to the goals of our worldwide Environmental Action Plan in developing office solutions with environmentally friendly and superior energy- and supply-saving features, without compromising your productivity.

- **Fast processing speeds** of 600 MHz, with standard 2 GB of RAM and 160 GB of Hard Disk Drive space support exceptional all-in-one productivity.
- An integrated 10.2" **Color Touch-screen Control Panel** offers outstanding clarity and easy viewing. Intuitive prompts, on-board help guidance and accessibility display, make programming your jobs from the device quick and effortless.
- The **long life technology** and '**class leading**' drum yields deliver extended preventive maintenance intervals and maximize device "uptime". This adds up to ultra-reliable operation and a low total cost of ownership.
- **Kyocera Command Center RX**, the MFP's embedded web home page, gives you the remote access you need to check device status, establish system settings, or access stored Document Box files from your desktop.
- **Standard connectivity** features including standard Gigabit Ethernet, offer seamless integration within virtually any network environment or platform.
- A standard **USB Host Interface** provides convenient print-from or scan-to capabilities for today's 'on the go' workforce in XPS, PDF, JPEG and TIFF.
- The ability to choose between an optional **Reversing Automatic Document Processor** or a **Dual Scan Document Processor** enables super fast scan speeds of up to 100 images per minute.
- The optional **1,000-sheet** and **4,000-sheet finishers**, both with multi-position staple, provide the professional touch your output deserves, and lets you efficiently handle shorter production runs in-house, optimizing time and minimizing costs.
- **Impressive toner yields** of 25,000 pages for black and 15,000 pages for each color, allow you to run long print jobs with maximum quality and productivity, while minimizing interruption.

The Power to Take Control of Everyday Tasks and Keep Information Moving

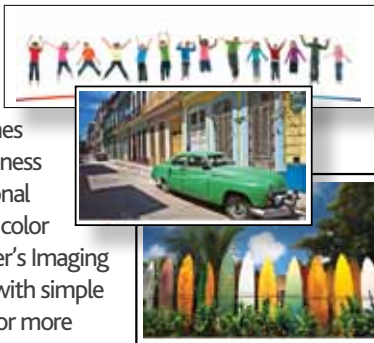
Information is your most important business asset, and you need a 'no holds barred' document imaging system to keep it flowing seamlessly. The CS 3050ci raises the bar on core functionality with unparalleled efficiency:

- **Exceptional print and copy capabilities** power your communications via robust paper handling up to 12" x 47" and 110 lb cover, plus a remarkable 7,150 sheet maximum paper capacity for long print runs with minimal interruptions.
- **Secure Document Box** lets you keep frequently used documents close at hand for hassle free printing, secure file sharing and pin-based Private Print.
- Pre-program and store commonly used copy, scan and print settings at the control panel and the KX Driver to simplify your daily tasks.
- Optional **Super G3, LAN Fax and Dual Fax** capability adds versatility while leveraging your investment in an MFP.

Color and Advanced Finishing Brings Professional Output In-House

The CS 3050ci is the smart choice for businesses who sometimes need to add color to their daily business documents as well as those occasional high-impact pieces. Easily optimize color with precision through the KX Driver's Imaging Tab. Then add the finishing touch with simple options such as staple/hole punch, or more advanced options including booklets and tri-folds.

For more graphic-intensive workflows, an optional Fiery® Controller lets you elevate your color to the next level.



Enhanced MFP Performance... Powered by HyPAS®

Enhance your CS 3050ci's capability with unique and scalable business applications, *powered by HyPAS* –Kyocera's powerful software development platform. These applications, developed by Kyocera or by our third-party solution partners, allow your business to further optimize your Copystar MFPs' "out-of-the-box" performance. Kyocera applications transform your MFP into a powerful resource that suits your existing document imaging and workflow needs today, as well as delivers the flexibility you need for tomorrow.

Our expanding suite of business applications include:

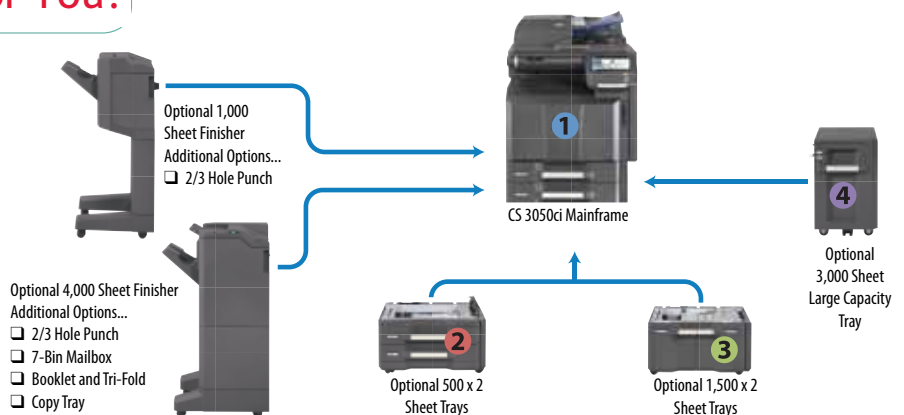
- **KYOCERA Mobile Print** - Simply and conveniently print files, web pages, and images using your smartphone or tablet.
- **OpenText RightFax Connector** - Scan and send documents to the RightFax server directly from Copystar MFPs for full fax server integration.
- **SharePoint Connector** - Microsoft SharePoint users can scan documents into their SharePoint folder and libraries to search/print directly from the Copystar MFP control panel.
- **Card Authentication** - Authenticate, Authorize and Track individual MFP usage with the simple swipe of an HID-card.
- **DMS Link** - Connect your Copystar MFP to most popular document management systems for document capture and routing.

Visit www.copystar.com to learn more about additional business applications designed to fit your essential needs.

Which Configuration is Right for You?

Truly designed with you in mind, the CS 3050ci brings configuration flexibility to the workplace, allowing you to customize the MFP to your specific paper handling needs.

Paper Handling Flexibility		Total Paper Capacity
InLine	Side Deck	
1		= 1,150 sheets
1 + 2		= 2,150 sheets
1 + 3		= 4,150 sheets
1 + 2 + 4		= 5,150 sheets
1 + 3 + 4		= 7,150 sheets



CS 3050ci



Shown with optional 175 sheet DSDP and 500 x 2 sheet paper trays



Shown with optional 175 sheet DSDP, 1,500 x 2 sheet paper trays and 1,000 sheet finisher



Shown with optional 175 sheet DSDP, 500 x 2 sheet paper trays and 4,000 sheet finisher



Newly designed, easy-to-use large color touch screen control panel

HyPAS™

Hybrid Platform for Advanced Solutions



Basic Specifications

Configuration	Color Multifunctional System – Print/Scan/Copy/Optional Fax
Pages Per Minute	Color and Black - Letter: 30 ppm, Legal: 18 ppm, Ledger: 15 ppm, 12" x 18": 15 ppm (print only)
Warm-up Time	25 Seconds or Less (Power On)
First Page Out	Copy: 6.2 Seconds or Less Black, 8.1 Seconds or Less Color; Print: 7.3 Seconds or Less Black, 9.5 Seconds or Less Color
Resolutions / Bit Depth	600 x 600 dpi; 9600 x 600 dpi interpolated / 8 bit depth
Memory / Hard Disk Drive	2 GB RAM Standard / 160 GB HDD
Duplex	Standard Stackless Duplex Supports Statement to 12" x 18", 16 lb Bond - 120 lb Index (60 – 220gsm)
Standard Output Tray	Statement - 12" x 18" / 250 sheets; up to 12" x 47" Banner/Single Sheet
Electrical Requirements	120V, 60Hz, 12.0A
Dimensions / Weight	26.30" W x 30.20" D x 29.41" H / 251.33 lbs
Max Monthly Duty Cycle	150,000 Pages Per Month

Paper Supply

Standard Paper Sources	Dual 500 Sheet Trays, 150 Sheet MPT; Auto Selection/Switching
Optional Paper Sources	Dual 500 Sheet Trays (PF-730), Dual 1,500 Sheet Trays (PF-740); 3,000 Sheet Large Capacity Tray (PF-770)
Paper Capacity	Standard: 1,150 Sheets; Maximum: 7,150 Sheets
Paper Size	Trays 1, 2 and PF-730: 5.5" x 8.5" – 12" x 18"; PF-740, PF-770: 8.5" x 11"; MPT: 5.5" x 8.5" – 12" x 18" (Multiple Sheets); Up to 12" x 47" Banner (Single Sheet)
Paper Weight	Trays: 16 lb Bond – 120 lb index (60 – 220gsm); MPT: 16 lb Bond – 110 lb Cover (60 – 300gsm)
Input Materials	Bond Paper, Recycled Paper, Transparencies, Cardstock, Envelopes

Print Specifications

Standard Controller	IBM PowerPC 750CL / 600 MHz
PDLs / Emulations	PRESCRIBE, PCL6 (6c, XL), KPDL3 (PS3), XPS; Optional: UG-34 IBM ProPrinter, Diablo 630, LQ-850
Fonts	136 KPDL3, 93 PCL6, 8 Windows Vista, 1 Bitmap
Windows OS Compatibility	Windows XP/2003/Vista/2008/7
Novell OS Compatibility	Novell NetWare 3.x/4.x/5.x/6.x
MAC OS Compatibility	Mac OS 10.x
UNIX OS Compatibility	Sun OS 4.1.x; Solaris 2.x; AIX; HP-UX (LPR)
Interfaces	Standard: 10/100/1000BaseTX, Hi-Speed USB 2.0, 2 USB Host Interfaces, 2 Expansion Slots Optional: 10/100/1000BaseTX (IB-50 for Dual NIC)
Network Print and Supported Protocols	TCP/IP, IPX/SPX, AppleTalk, NetBEUI, IPv6, IPsec, SSL, WSD Print
Drivers	KX Driver, Mini Driver, KX Driver for XPS, XPS Mini Driver, Network Fax Driver, PPD for MAC
Utilities	PRESCRIBE, PDF Direct Print, KMnet Admin, KMnet Viewer, Kyocera Command Center RX

Scan Specifications

Scan Resolution	200, 300, 400, 600 dpi
File Formats	BW: TIFF, XPS, PDF, PDF/A; Color: TIFF, JPEG, XPS, PDF, PDF/A
PDF Extension	High Compression PDF, Encrypted PDF
Scan Speeds	DP-770: Simplex: 65 ipm BW, 65 ipm Color (300 dpi); Duplex: 39 ipm BW, 39 ipm Color (300 dpi) DP-771: Simplex: 70 ipm BW, 70 ipm Color (300 dpi); Duplex: 100 ipm BW, 80 ipm Color (300 dpi)
Connectivity / Supported Protocols	10/100/1000BaseTX, TCP/IP
Scanning Functions	Scan to Folder (SMB), Scan to e-Mail, Scan to FTP, Scan to USB, WSD Scan, TWAIN Scan
Original Size	Through DP: Statement to 11" x 17"; Glass: up to 11" x 17"
Driver	TWAIN/WIA Driver

Copy Specifications

Image Mode	Text, Photo, Text/Photo, Auto, Manual, Map
Continuous Copy	1 – 999 / Auto Reset to 1
Additional Features	Positive/Negative Reverse, Mirror Image, Rotate Copy, Border Erase, Split Copy, Electronic Sort, Margin Shift, Page Number, Form Overlay, XY Zoom, Prevent Bleed Through, Stamp
Job Management	1,000 Department Codes, Job Programs, Job Build, Shortcut Keys, Repeat Copy
Color Adjustment	One Touch, Hue, Auto Exposure, Sharpness
Magnification / Zoom	Full Size, 5 Reduction, 5 Enlargement Preset Ratios, 25 – 400% in 1 step increments
Document Box	Custom Box, Job Box, Removable Memory Box, Fax Box (with optional Fax System)
Document Processor	Optional DP-770 or DP-771
Type / Capacity	DP-770: Reversing Automatic Document Processor / 100 Sheets DP-771: Dual Scan Document Processor / 175 Sheets
Acceptable Originals	5.5" x 8.5" – 11" x 17"
Acceptable Weights (Simplex / Duplex)	(DP-770) Simplex: 13 lb Bond – 90 lb Index; Duplex: 16 – 32 lb Bond (DP-771) Simplex: 13 lb Bond – 120 lb Index; Duplex: 16 lb Bond – 120 lb Index

Fax Specifications

Compatibility / Data Compression	G3 Fax / MMR, MR, MH, JBIG
Transmission Speed / Modem Speed	Approximately 3 seconds per page / 33.6 Kbps
Fax Memory	Standard: 12 MB; Maximum: 120 MB
Driver	KM Network Fax Driver
Fax Functions	Duplex TX/RX, Confidential RX/TX, F-Code RX/TX, Broadcasting, Fax Box, Dual Fax

Optional 1,000 Sheet Finisher DF-770

Stack / Staple Capacity	Main Tray: 1,000 Sheets / 50 sheets (up to 24 lb Bond (90gsm))
Paper Size	5.5" x 8.5" – 12" x 18"
Paper Weight	16 lb Bond – 110 lb Cover (60 – 300gsm)
Edge Staple Position	3 Positions: Top Left, Bottom Left, Center Bind
Optional Punch	PH-7A 2 and 3 Hole Punch Unit, Supports 8.5" x 11" – 11" x 17"; 13 lb Bond – 110 lb Cover (45 – 300gsm)

Optional 4,000 Sheet Finisher DF-790

Stack / Staple Capacity	Main Tray: 4,000 Sheets; Sub Tray (B): 200 Sheets; Sub Tray (C): 100 Sheets / 65 sheets (up to 24 lb Bond (90gsm))
Paper Size	5.5" x 8.5" – 12" x 18"
Paper Weight	16 lb Bond – 110 lb Cover (60 – 300gsm)
Edge Staple Position	3 Positions: Top Left, Bottom Left, Center Bind
Optional Multi-bin Mailbox	MT-730 Includes 7 Trays; Supports 16 lb Bond – 90 lb Index (60 – 163gsm) Stack Capacity per bin: 100 Sheets: 5.5" x 8.5", 8.5" x 11", 11" x 17"
Optional Punch	PH-7A 2 and 3 Hole Punch Unit, Supports 8.5" x 11" – 12" x 18"; 13 lb Bond – 110 lb Cover (45 – 300gsm)
Optional Booklet Folder / Tri-fold Unit	BF-730 Booklet Folder Supports 8.5" x 11", 8.5" x 14", 11" x 17"; 16 lb Bond – 24 lb Bond (60 – 90gsm) 16 sheets; 25 lb Bond – 28 lb Bond (91 – 105gsm) 13 sheets; Fold booklet – no staple: 16 lb Bond – 24 lb Bond (60 – 90gsm) 5 sheets; 25 lb Bond – 72 lb Index (91 – 120gsm) 3 sheets; 32 lb Bond – 110 lb Cover (121 – 256gsm) 1 sheet; Trifold: 16 lb Bond – 24 lb Bond (60 – 90gsm) 5 sheets; 25 lb Bond – 72 lb Index (91 – 120gsm) 3 sheets

Additional Options

Data Security Kit Provides Security Overwrite and Encryption for Print, Copy, and Scan, Optional System Memory, Optional Fax Memory, Original Hardcopy Holder (Document Tray), Card Authentication Kit, Banner Guide (A)

Specifications and design are subject to change without notice.

For the latest on connectivity visit www.copystar.com

All trademarks are the property of their respective owners.

KYOCERA Document Solutions America, Inc. Headquarters: 225 Sand Road, Fairfield, NJ

07004-0008, USA

©2012 KYOCERA Document Solutions America, Inc.

IC# 855D400291

